

## Windows Vista

### Configuring Your Network Settings for a Wireless Ethernet Connection

Before you begin, exit all programs and close all windows.

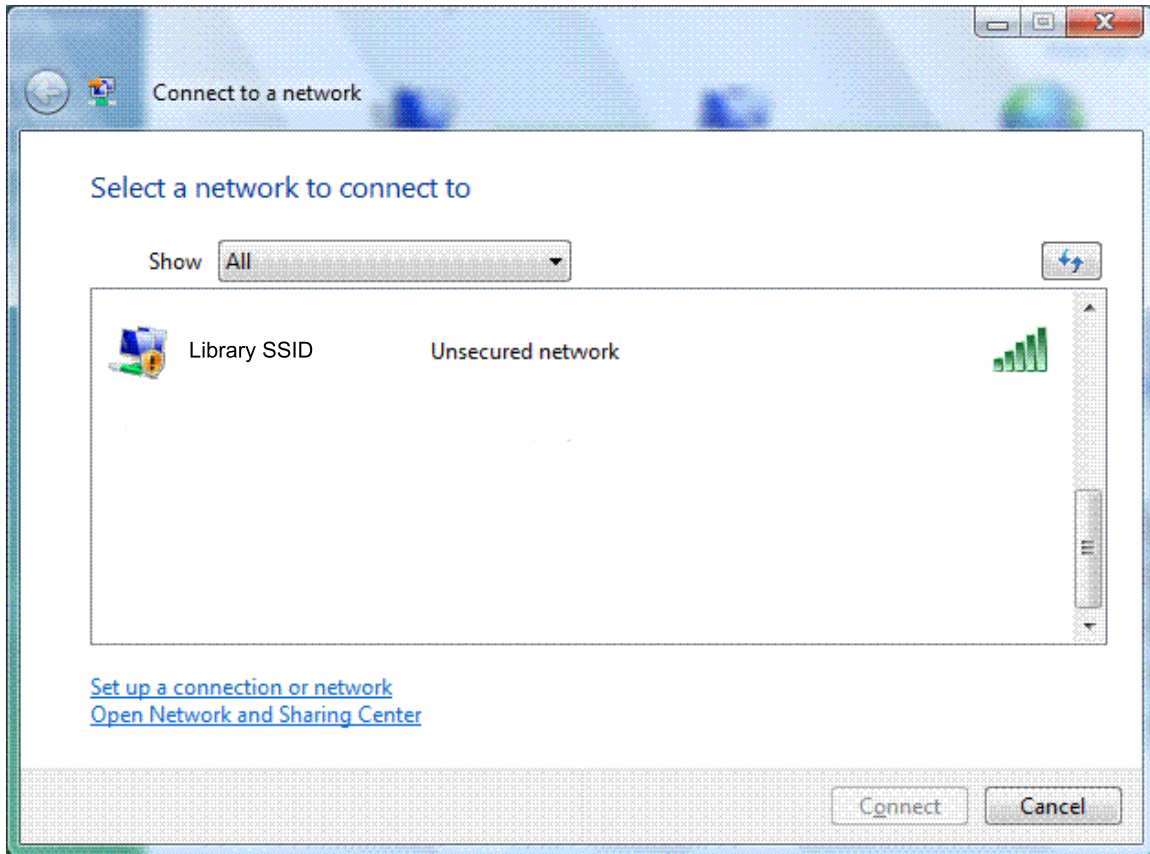
#### **Make sure your wireless Ethernet card is properly installed and recognized.**

1. In all most all instances the wireless network SSID or wireless identifier should be automatically detected by the Microsoft software.
2. In this document you will see reference to the text **Libraries SSID**. This will represent the unique wireless broadcast signal for the public library you are visiting. This identifier should be displayed on various table tents and literature throughout the library. If you are unable to determine the libraries identifier, please see assistance from library personnel.

You can access the **Connect to a network** dialog box from many locations in Windows Vista, including the following:

- By clicking **Start**, and then **Connect to** from the Windows Vista desktop
- From the **Manage wireless connections** dialog box
- From the **Connect/Disconnect** context menu option of a wireless network adapter in the Network Connections folder

The following figure shows the **Connect to a network** dialog box.



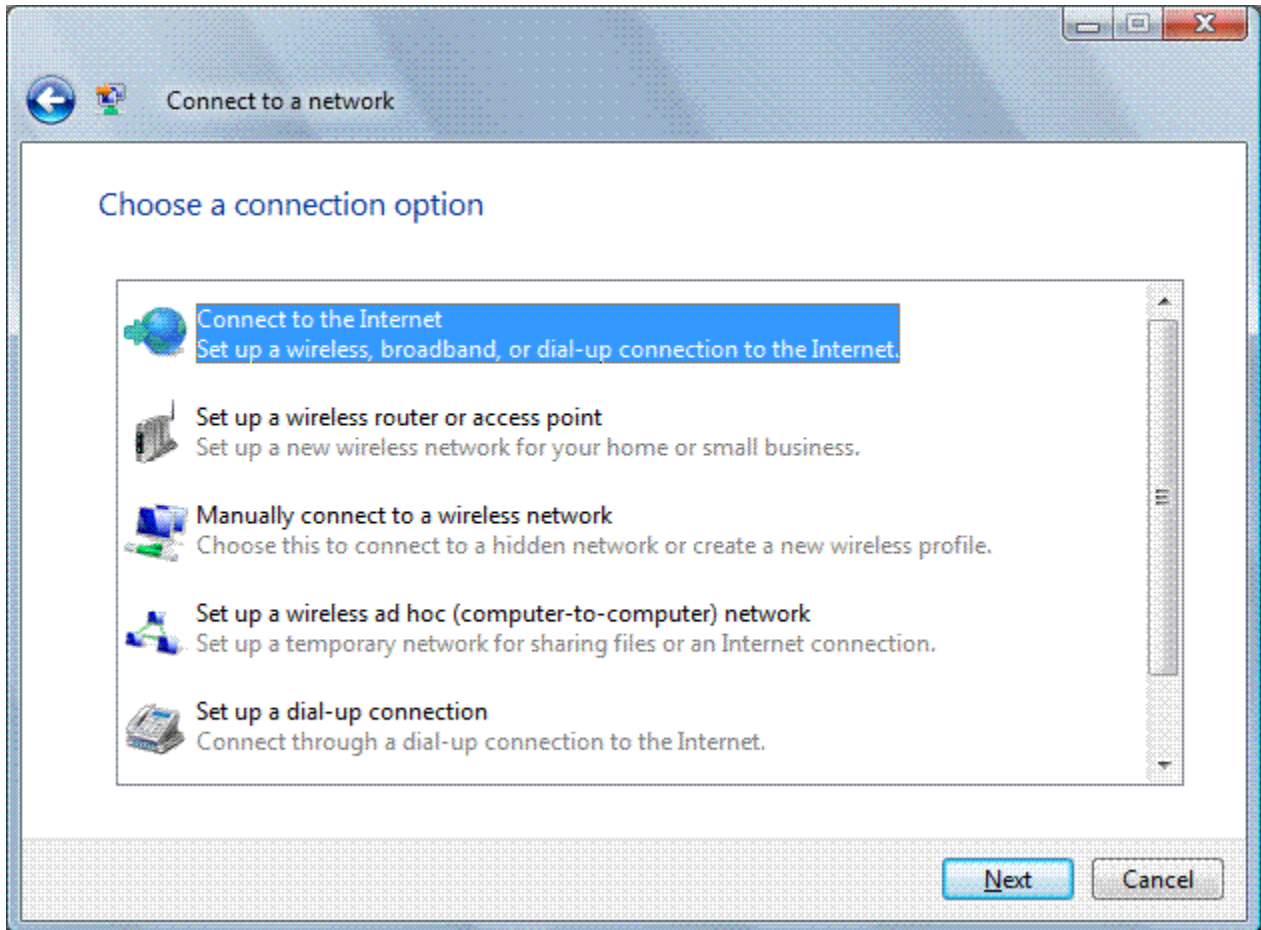
The new **Connect to a network** dialog box is a redesigned version of the **Choose a wireless network** dialog box in Windows XP with Service Pack 2 (SP2). This new dialog also supports virtual private network (VPN) and dial-up connections (including Connection Manager and Point-to-Point Protocol over Ethernet [PPPoE]).

In **Show**, you can select the following:

- **All** Wireless, dial-up, and VPN connections.
- **Wireless** Only wireless connections.
- **Dial-up and VPN** Only dial-up and VPN connections.

By default, **All** is selected and the list of networks consists of wireless networks that have been detected and dial-up and VPN connections that have been configured. A non-broadcast network appears in the list with the name “Unnamed Network.” To connect to a listed network, double-click the **Library SSID** or click the network name and then click **Connect**. For a non-broadcast network, you will be prompted to type the wireless network name.

If the wireless network you want to connect to is not listed, click **Set up a connection or network**. Windows Vista displays the following page.

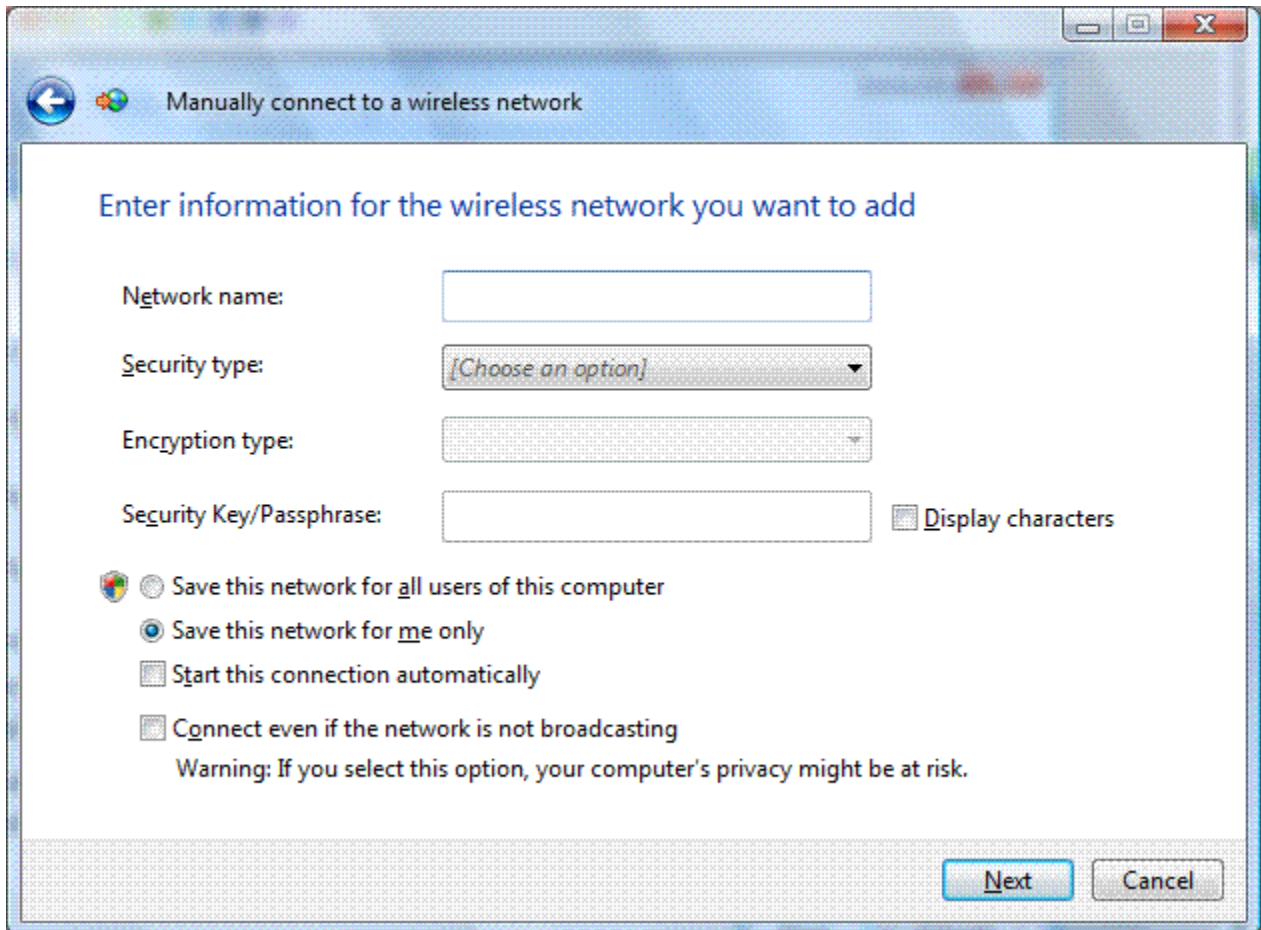


On the **Choose a connection option** page, you can select the following:

- Connect to the Internet
- Set up a wireless router or access point
- Manually connect to a wireless network
- Set up a wireless ad hoc (computer-to-computer) network
- Set up a dial-up connection
- Connect to a workplace

The **Choose a connection option** dialog box is a central location to configure wireless, dial-up and VPN connections and is a consolidation of the Create a New Connection and Wireless Network Setup wizards in Windows XP with SP2.

To manually configure the wireless settings for a wireless network, click **Manually connect to a wireless network**, and then click **Next**. Windows Vista displays the following page.



On the **Enter information for the wireless network you want to add** page, configure the following:

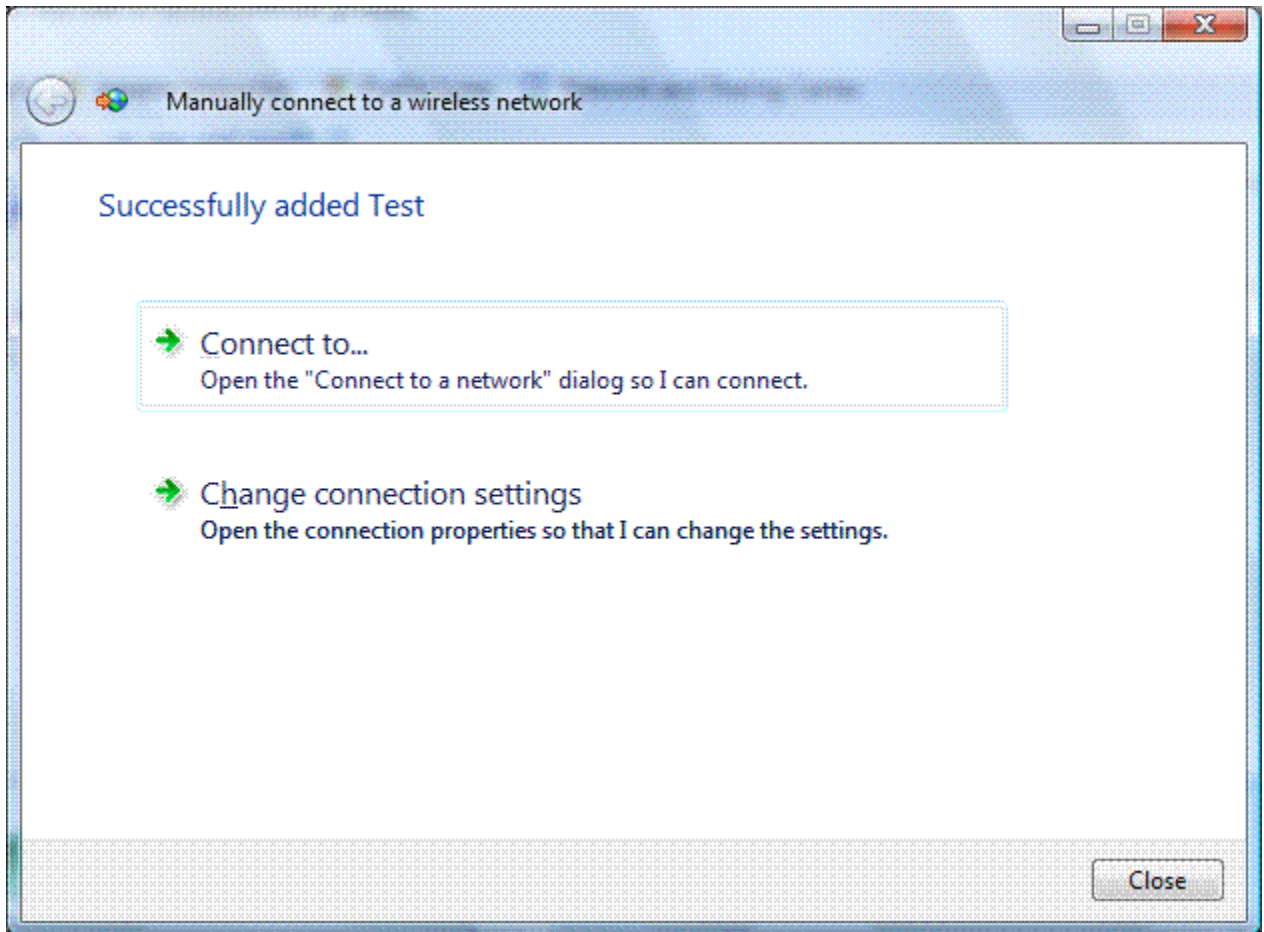
- **Network name** Type the name of the wireless network. This would be the **Library SSID**.
- **Security type** Select the method used to authenticate a connection to the wireless network. The only choice you will select is the following:
  - **No authentication (Open)** Open system authentication with no encryption.

The choices listed depend on the capabilities of your wireless network adapter that are reported to Windows.

- **Encryption type** When you have selected **No authentication (Open)** option from the Security type. The option **None** is selected for you or automatically provided.
- **Security Key/Passphrase** – THIS OPTION WILL NOT BE NEEDED. **Display characters** Specifies whether you want to view the value typed in **Security Key/Passphrase**. – THIS OPTION WILL NOT BE NEEDED.

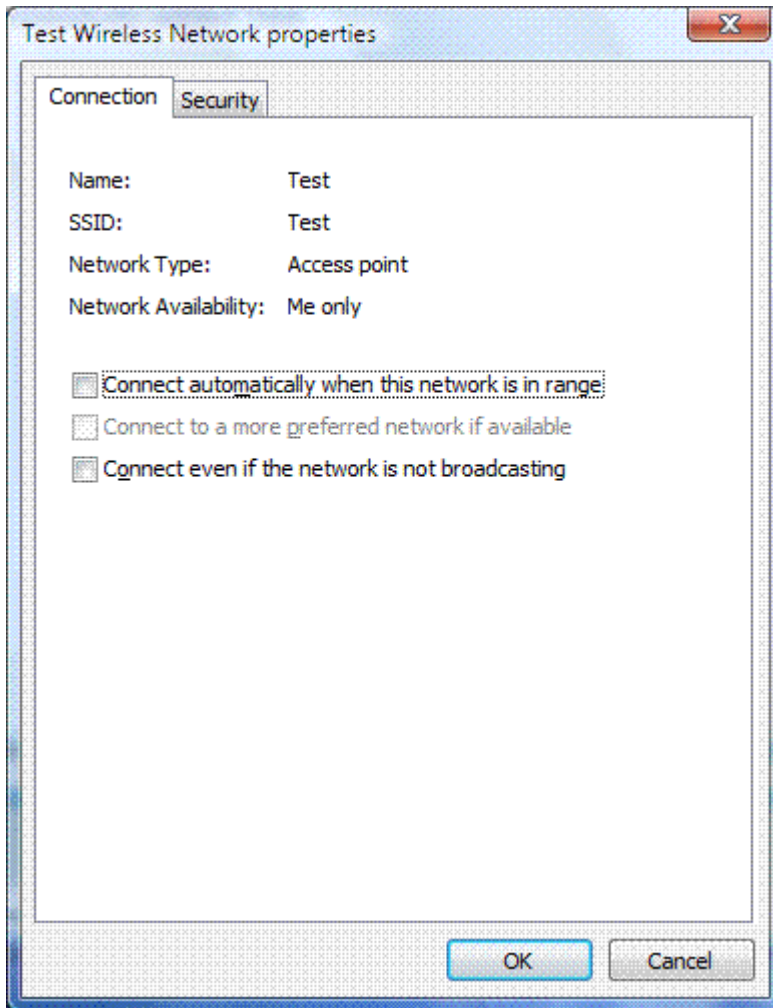
- **Save this network for all users of this computer/Save this network for me only** Specifies that this wireless network profile will be in the list of networks for other users of the computer or only the current user. If specified only for the current user, the wireless network will be disconnected when the user logs off or switches to another user.
- **Start this connection automatically** Specifies whether Windows Vista will automatically connect to this wireless network. If you clear this checkbox, you must manually connect to the wireless network from the **Connect to a network** dialog box.
- **Connect even if the network is not broadcasting** Specifies whether Windows should attempt to connect even if the wireless network is not broadcasting its name. This will cause Windows Vista to send Probe Request frames to locate the wireless network. These probe request frames can be used by malicious users to determine the name of the non-broadcast network.

When you click **Next**, Windows Vista displays the following page.



To connect to the wireless network that you just created, click **Connect to**, and then double-click the newly created wireless network in the **Connect to a network** dialog box.

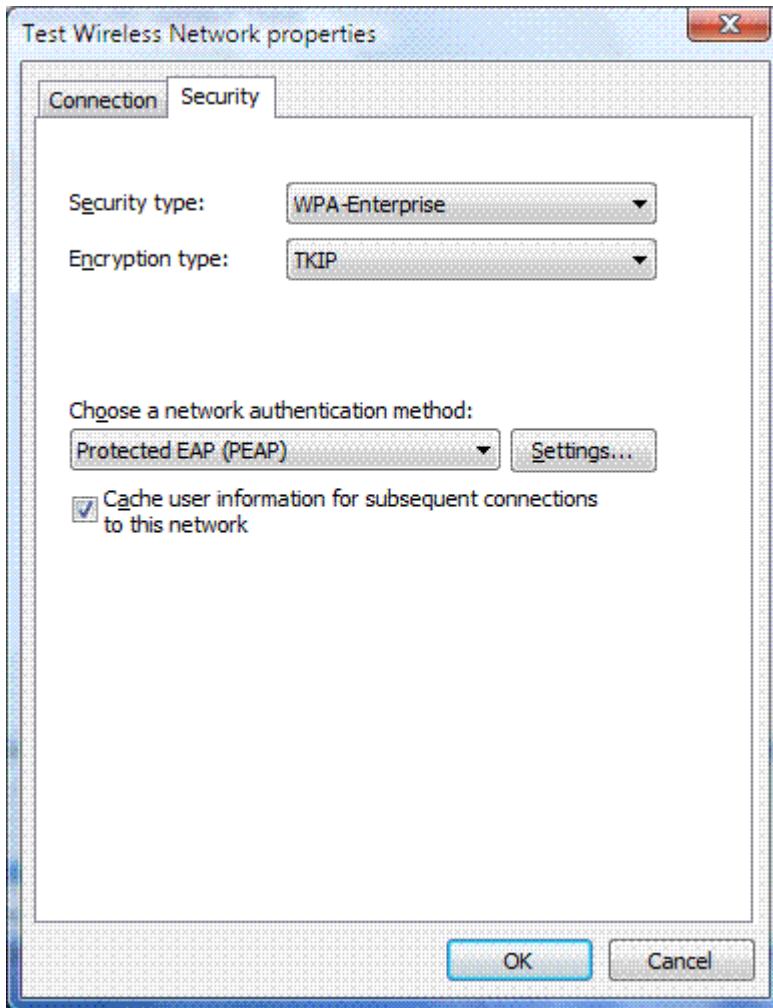
To configure the properties of the wireless network you have just created, click **Change connection settings**. Windows Vista displays the following dialog box.



From the **Connection** tab, you can view the wireless network's name, SSID, network type (either **Access point** for infrastructure mode networks or **Computer-to-computer** for ad hoc mode networks), and availability. You can also configure the following:

- Connect automatically when this network is in range
- Connect to a more preferred network if available
- Specifies whether Windows Vista will automatically disconnect from this wireless network if a more preferred wireless network comes within range.
- Connect even if the network is not broadcasting

The following figure shows the **Security** tab.



On the **Security** tab, you can specify the following security types:

- No authentication (Open) - THIS IS THE PREFERRED METHOD TO CONNECT TO THE OPEN LIBRARY WIRELESS NETWORK.